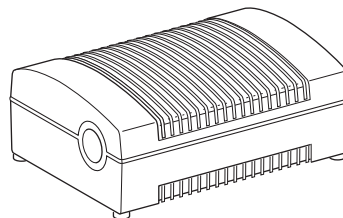


Mobile living made easy.



↔ DOMETIC POWER & CONTROL POWER SUPPLY



EPS817

EN **Mains adapter**
Operating manual

dometic.com

**YOUR LOCAL
DEALER**

dometic.com/dealer

**YOUR LOCAL
SUPPORT**

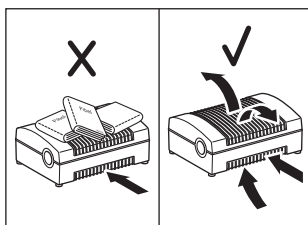
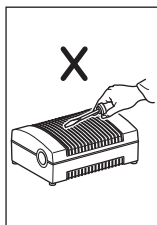
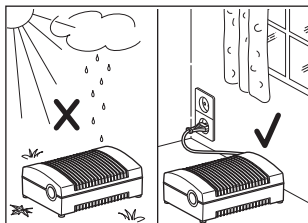
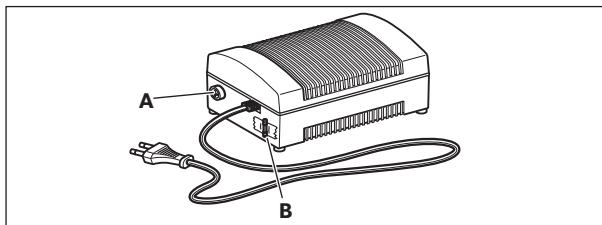
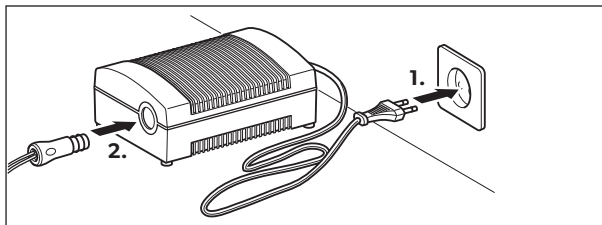
dometic.com/contact

**YOUR LOCAL
SALES OFFICE**

dometic.com/sales-offices

A complete list of Dometic companies, which comprise the Dometic Group, can be found in the public filings of:
DOMETIC GROUP AB Hemvärmgatan 15 SE-17154 Solna Sweden

4445102888 2020/12/15



Please read these instructions carefully and follow all instructions, guidelines, and warnings included in this product manual in order to ensure that you install, use, and maintain the product properly at all times. These instructions **MUST** stay with this product.

By using the product, you hereby confirm that you have read all instructions, guidelines, and warnings carefully and that you understand and agree to abide by the terms and conditions as set forth herein. You agree to use this product only for the intended purpose and application and in accordance with the instructions, guidelines, and warnings as set forth in this product manual as well as in accordance with all applicable laws and regulations. A failure to read and follow the instructions and warnings set forth herein may result in an injury to yourself and others, damage to your product or damage to other property in the vicinity. This product manual, including the instructions, guidelines, and warnings, and related documentation, may be subject to changes and updates. For up-to-date product information, please visit www.dometic.com.

Intended Use

This device is suitable for use as a mains adapter for thermoelectric coolers and other devices with 12 V DC operating voltage with a maximum power consumption of 72 W.

This mains adapter is only suitable for the intended purpose and application in accordance with these instructions.

This manual provides information that is necessary for proper installation and/or operation of the mains adapter. Poor installation and/or improper operating or maintenance will result in unsatisfactory performance and a possible failure.

The manufacturer accepts no liability for any injury or damage resulting from:

- Incorrect assembly or connection, including excess voltage
- Incorrect maintenance or use of spare parts other than original spare parts provided by the manufacturer
- Alterations to the product without express permission from the manufacturer
- Use for purposes other than those described in this manual

Dometic reserves the right to change product appearance and product specifications.

Safety instructions

- **Electronic devices are not toys!**
- Always keep and use the device well out of the reach of children.
- Check that the voltage specification on the type plate corresponds to that of the energy supply.
- If the cable is damaged, it must be replaced to prevent possible electrical hazards.
- If the supply cord is damaged, it must be replaced by the manufacturer, its service agent or similarly qualified persons in order to avoid a hazard.
- Do not operate the device near flames or other heat sources (heating, direct sunlight, gas ovens etc.).
- Never immerse the device in water.
- Protect the device and the cable against heat and moisture (e.g. rain).
- The socket-outlet shall be installed near the equipment and the connection shall be easily accessible.
- The AC plug is used as a disconnect device when need to power off this equipment.
- Ensure that the ventilation slots are not covered.
- This device may only be repaired by qualified personnel. Inadequate repairs can lead to considerable hazards. Should your device need to be repaired, please contact customer service.

Troubleshooting

If no output voltage is present, the fuse may be blown.

Screw out the fuse insert (A) and replace the defective fuse with a spare fuse (B).

Technical data

	EPS817
Input voltage:	220 – 240 V / 50 Hz
Current consumption:	0,6 A
Output voltage:	12 to 13 V DC
Constant operation limit:	6 A
Output power at 12 V DC :	72 W
Fuse:	T630 mA 250V